

Date of approval: 13th April 2026

No.	Related Documents	Status *
1	Latest version of Tide table	Active
2	ISPS ship pre-arrival form (F-51/52.005)	Active
3	Maritime Declaration of Health form (F-51/52.021)	Active
4	Questions related to the Ebola outbreak (F51/52.027)	Active
5	Shipping notice 2015/01 Minimum requirements for safe and efficient passage of sea-going vessels in Surinamese waters	Active
6	Shipping notice 2023/06 nautical Accessibility Suriname River	Active
7	Shipping Notice 2026/ Nautical Accessibility Support Facility	
8	Chart no 2765/2218 Suriname River from Entrance to Toevlucht and corresponding ENC's no. SR2218A and no.SR2218B	Active
9	Relevant NtM of the area on www.mas.sr	Active

Additional requirements for ships to navigate alongside Support Facility

At the Support Facility, access is granted only to non-ISPS vessels.

1. Length overall (LOA)

All vessels are required to moor Port side during flood (tide) due to the approximate distance of 150m (one hundred and fifty meters) between Support Facility and the J.A. Wijdenbosch Bridge. Support Facility can accommodate vessels with a maximum length of **ninety meters (90m)**.

2. Tugboat assistance

Port side mooring vessels and vessel departure:

- All vessels with a length up to 50 meters without bow thrusters are required to have tugboat assistance.
- All vessels with a length of more than fifty meters (50m) are required to have tugboat assistance with a minimum capacity of fifteen hundred Horsepower (1500HP).

3. Depth at Berth

The berthing area where vessels are moored at Support Facility has a depth of 4.4 meters at Low Water Spring

4. The calculated vessel draft

Vessels mooring and departing at Port side is: 4.4m- 0.20m (keel clearance) = 4.2 m+ tidal rise calculated at time of mooring.

Bathymetric survey for monitoring the depth at Support Facility

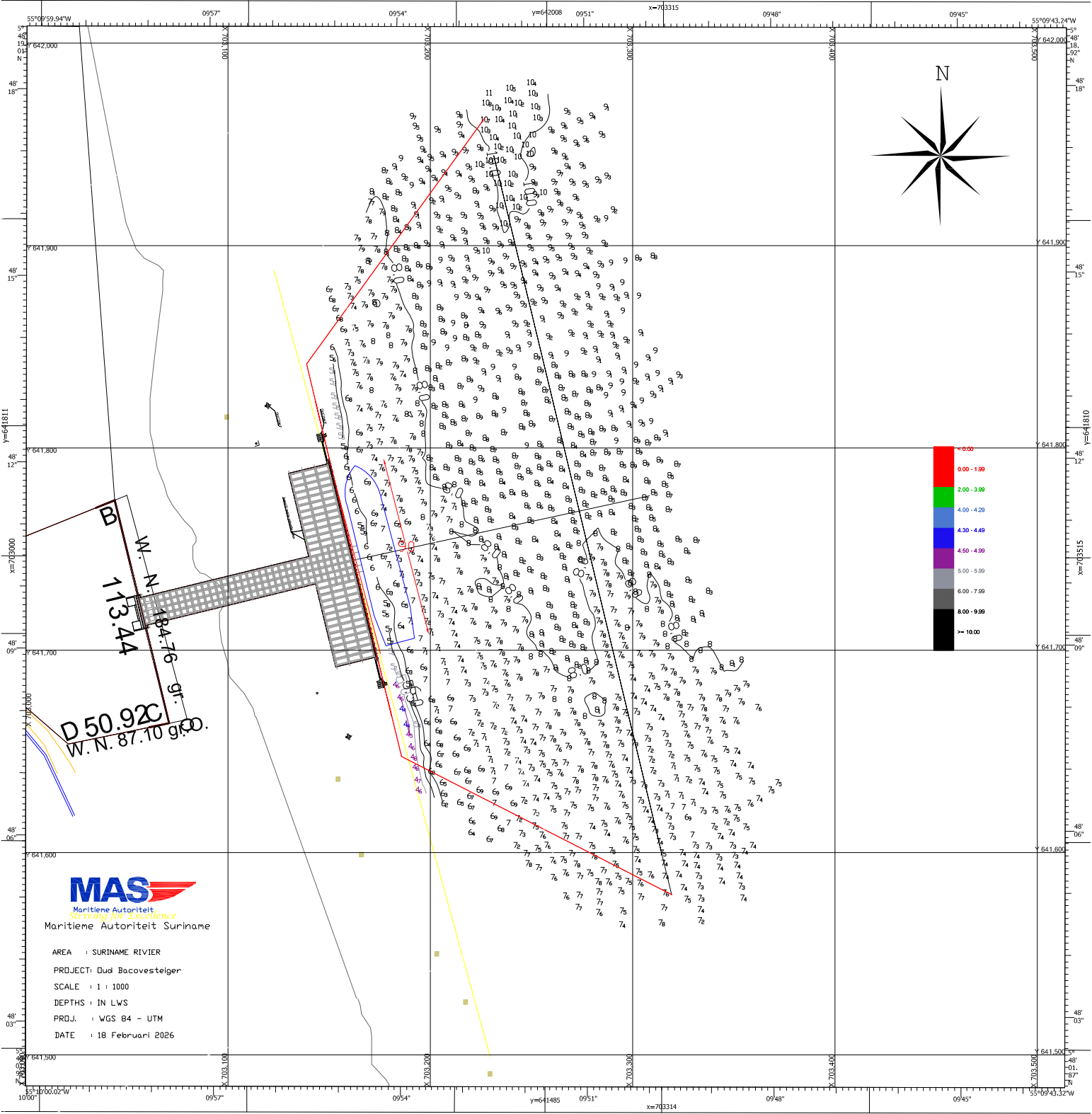
The Maritime Authority Suriname will issue a Shipping Notice regarding the depth at the Support Facility on a yearly basis after each bathymetric survey. The latest depth survey of the Support Facility is dated 18th February 2026 (depths are referred to LWS) hereby shown as an attachment in figure 1.

Note:

- In special or exceptional cases, the MAS is fully authorized to request tugboat assistance for partial or the entire distance, to navigate within the channel.
- Vessels with bow thrusters which are not in good working condition are regarded as vessels without bow thrusters.
- A mooring boat must be on standby to assist with the mooring lines.
- For tugboat assistance tugboat operators/companies should possess a valid license for tugboat operations issued by the Maritime Authority Suriname.
- Draft calculation is based on freshwater.

Approved by the
Maritime Authority Suriname,

Mr. M. Amafo LL.M
Director



MAS
 Maritieme Autoriteit
Serving for Excellence
 Maritieme Autoriteit Suriname

AREA : SURINAME RIVIER
 PROJECT: Duid Bacovestelger
 SCALE : 1 : 1000
 DEPTHS : IN LWS
 PRJ.J. : WGS 84 - UTM
 DATE : 18 Februari 2026