

Date of approval: January 2026

No.	Related Documents	Status *
1	Latest MAS Tide Table	Active
2	ISPS ship pre-arrival form (F-51/52.005)	Active
3	Maritime Declaration of Health form (F-51/52.021)	
4	Questions related to the Ebola outbreak (F51/52.027)	Active
5	Shipping notice 2015/01 Minimum requirements for safe and efficient passage of sea-going vessels in Surinamese waters	Active
6	Shipping notice 2024/02 nautical Accessibility Nickerie River	Active
7	Chart no 2766 Corantijn and Nickerie River ENC no SR5D2766, Nickerie River - Nickerie Point to Waterloo	Active
8	Relevant NtM of the area on www.mas.sr	Active

Additional requirements for ships to navigate alongside Haven van Nieuw Nickerie

1. Length overall (LOA)

The jetty at Havenfaciliteit Ramadhin N.V. can accommodate vessels with a maximum length of **ninety meters (90m)**

2. Depth at Berth:

The berthing area at Havenfaciliteit Ramadhin N.V. has a depth of 1.2 meters at Low Water Spring.

The calculated vessel draft at Havenfaciliteit Ramadhin N.V. for vessels up to ninety meters (90m):

- Vessels mooring and departing at starboard side is 1.2 m- 0.20m (keel clearance) = 1.0m + tidal rise calculated at time of mooring.
- Vessels mooring and departing at portside is 1.2 m- 0.20m (keel clearance) = 1.0m + tidal rise calculated at time of mooring.

3. Tugboat assistance and bow thrusters

At Havenfaciliteit Ramadhin N.V. there is no requirement for tugboat assistance.

NAABSA

The NAABSA procedures (Shipping notice 2021/03 NAABSA Berth procedure) applies to the Havenfaciliteit Ramadhin N.V. Jetty. The vessel owner may determine the NAABSA draft of the vessel, taking into account the accessibility of the Navigation channel of the Nickerie river (Shipping notice 2024/02 nautical Accessibility Nickerie River) and the calculated vessel draft at the Havenfaciliteit Ramadhin N.V.


Bathymetric survey for monitoring the depth at Havenfaciliteit Ramadhin N.V.

Due to the rapid sedimentation rate periodic maintenance is required. The Maritime Authority Suriname will issue a Shipping Notice regarding the depth at Havenfaciliteit Ramadhin N.V. on yearly basis after each bathymetric survey. The latest depth survey at Havenfaciliteit Ramadhin N.V. 15 October 2025. (depths are referred to LWS) is hereby shown as an attachment in figure 1.

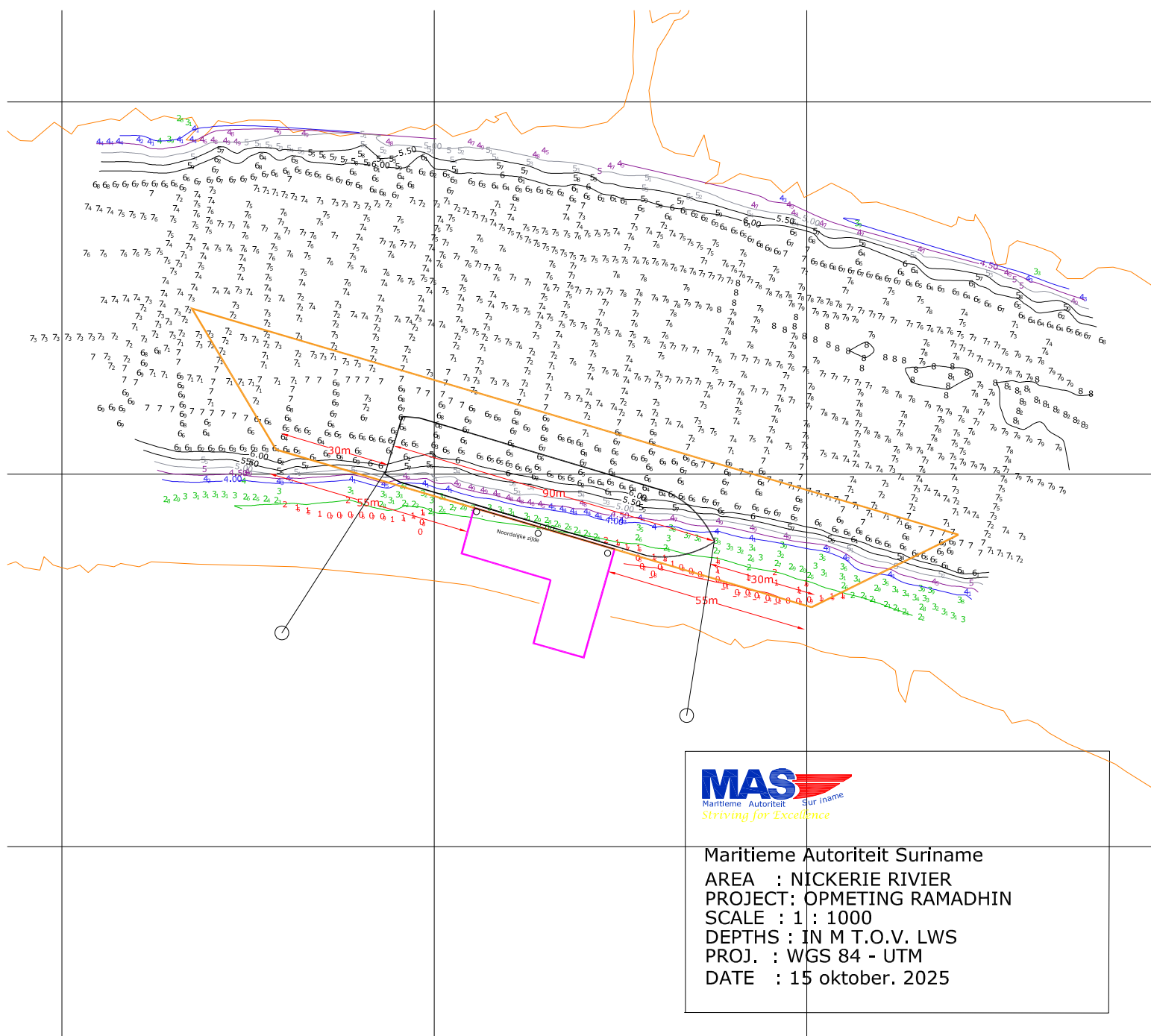
Note:

- In special or exceptional cases, the MAS is fully authorized to request tugboat assistance for partial or the entire distance to be navigated within the channel
- Vessels with bow thrusters which are not in good working condition are regarded as vessels without bow thrusters
- A mooring boat must be on standby to assist with the mooring lines
- For tugboat assistance tugboat operators/companies should possess a valid license for tugboat operations issued by the Maritime Authority Suriname
- Draft calculation is based on freshwater

Approved by the
Maritime Authority Suriname,



Mr. M. Amafo LL.M
Director



Maritieme Autoriteit Suriname
AREA : NICKERIE RIVIER
PROJECT: OPMETING RAMADHIN
SCALE : 1 : 1000
DEPTHS : IN M T.O.V. LWS
PROJ. : WGS 84 - UTM
DATE : 15 oktober. 2025